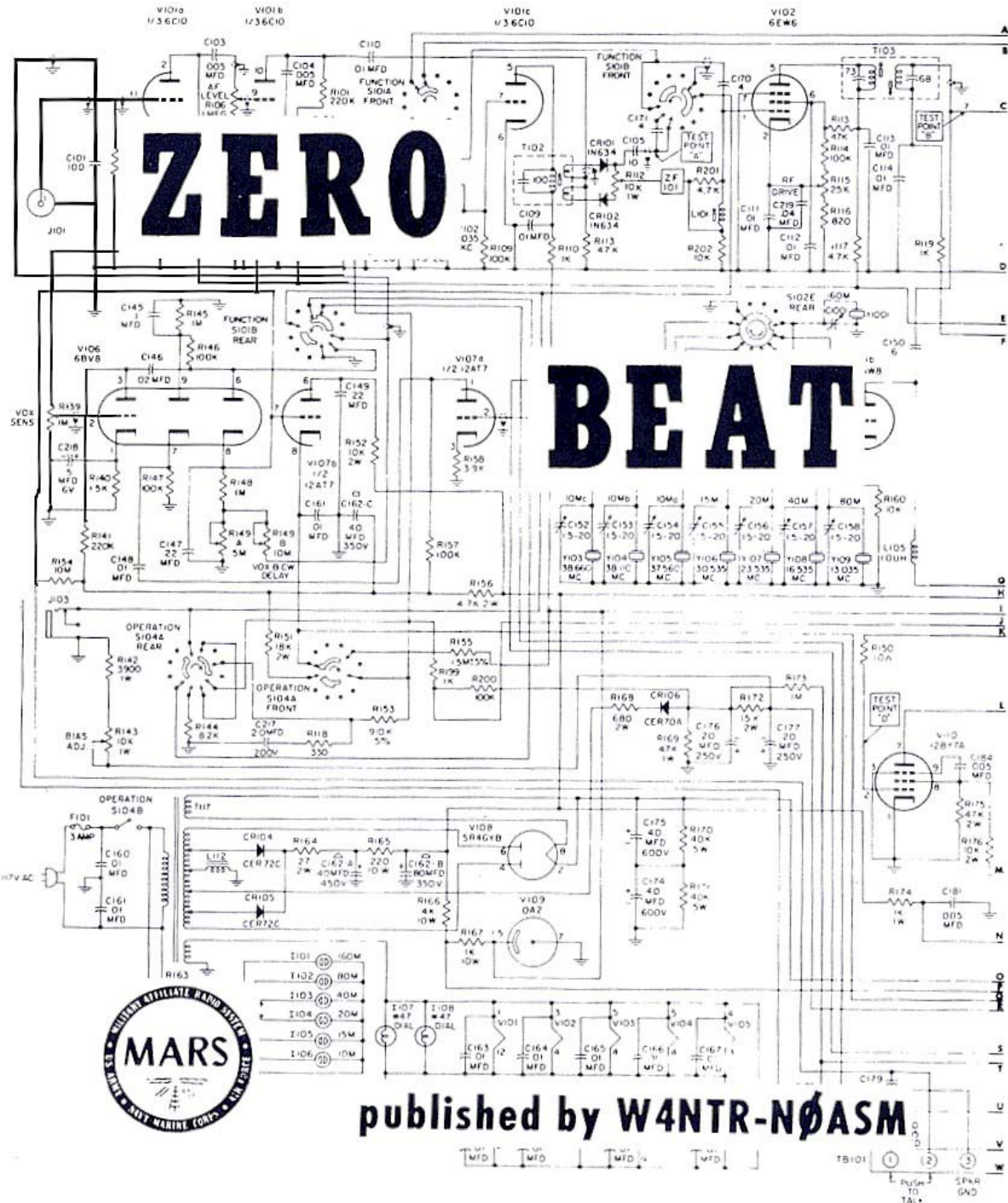


AUGUST 1, 1968



HEADQUARTERS MARINE CORPS HENDERSON HALL ARLINGTON, VIRGINIA 22214

ZERO BEAT is published monthly by, Navy MARS station N0ASM/NAV-2, Special Services. Headquarters Battalion, Headquarters Marine Corps, Henderson Hall, Arlington, Virginia on government equipment with appropriated funds. Not directive in nature but published for the information and interest of all Marine Corps Command Navy MAR'S Stations (N0ALM). Opinions expressed are not necessarily those of the Marine Corps.

THIS MONTH'S COVER

Layout: Sgt Robert J. Mattson @ NOASM/
NAV2

This months cover represents the reformation of OUR (NOALM) magazine Zero Beat. It also symbolizes the forward outlook of MARS now and future for highly trained operators and technicians

NAV-2 would like its readers to submit all ideas for a change of cover each month. Full credit will be given in this column for any submitted material that is used.



editorial

CUSTODIAN NAV2: LT D.E. HUMPHREY
EDITOR & NCOIC: GY-SGT WESLEY L. WILSON
MANAGING EDITOR: SGT ROBERT J. MATTSON
ASSOCIATE EDITOR: SGT BENNETH C. SETTER
ART DIRECTORS: SGT PATRICK J. NOLAN
SGT JOSEPH A. DUGAN

features

1. DEPENDABILITY in COMMUNICATIONS SYSTEMS.....1
 2. MARINES AT WORK.....4
 3. FCC REPORT.....5
 4. WHEN YOUR RIG BUGS OUT.....5
 5. THE LID.....7
 6. STATION of the MONTH.....9-10
 7. MODEL "28" THEORY.....12-13-14-15
-

departments

- NAV-MARS MARINE LIAISON OFFICE...2&6
NEWS & VIEWS.....3
RVN/CONUS P/P COORDINATOR.....6
ORDERS.....6
THE ROCK (OKINAWA).....7
IF I WERE CHIEF NAVY MARS.....8
FOR SALE & SWAP.....11
TRAFFIC REPORT.....16-17

Editor's Notes

By GySgt Wesley L. Wilson
@ NOASM/NAV2

Any operation, no matter how small or large, can only be a success if those personnel associated with it have the ability to accomplish the mission. Plans, operations, studies and numerous other problems are subject to change until the final operation is placed into effect. As the first man goes down the net new problems develop and it takes efficient leaders to evaluate, revise and construct new tactics to establish a successful beachhead.

Navy MARS is also an operation but a continuing one. Our problems are somewhat like a military operation. Plans originally made are subject to change and will continue to do so. Not one person in Navy MARS can devise a definite and workable plan that will satisfy every operator and probe to be the ultimate solution to the ever present problem of improvement. From the junior operator to the top brass, imagination, dedication, devotion and intelligence is required to accomplish the final goal; delivery of information as accurately and quickly as possible to the addressee.

Webster defines improvement as: 1. An increase in value or in excellence of quality or condition. 2. An addition or change that improves something. 3. An improving of being improved and 4. Betterment. From these definitions it is seen that Navy MARS must be improved to continue being an outstanding organization. Once we stop improving we have reached a level that is less than desirable.

During the last few months there has been definite revisions to the basic concept. In no way was the new plan devised to restrict any one station or reduce traffic. It was devised to allow the traffic to flow in a more systematic manner, conserve frequencies and allow some of our hard working operators a brief respite. Please fellows, let's not forget that we are only one spoke in this very large wheel and take into consideration our other stations and operators.

Wes

DEPENDABILITY in communications systems?

The Ionospheric Telecommunications Laboratory of the U.S. Department of Commerce publishes High Frequency System Performance Predictions each month as a free service to Military Affiliate Radio Systems.

To obtain these prediction charts write to Mr. Alfred F. Barghausen or Mr. Eduardo C. Padilla Ionospheric Telecommunications Laboratory, U.S. Department of Commerce, Environmental Science Services Administration, Institute for Telecommunication Sciences, Boulder, Colorado stating your mailing address, location of station, power used antenna used and location of stations worked.

These charts can be invaluable in predicting conditions one month in advance.

A smile always adds something when a stranger takes you at face value.

via SARA SLIP

Behind the Lines...

Well here it is, the first addition of Zero Beat under my management. I once took a course in journalism, as as you can see failed miserably, but as they say, "we try harder."

A few new departments were added to try and stir interest in OUR* paper. I even changed the report form, figuring maybe our stations aren't supplied with paper. There must be some reason for no response, hope to remedy this situation as the new managing editor. I am trying to make the paper more informative and somewhat of a better layout, but there is only so much you can do with five (5) contributors for the month. I'm not going to ramble on, but will see how the pickings look next month.


MANAGING EDITOR

*NOALM



Information Bulletin

NOTE: THE TERM "NAVY-MARINE CORPS MARS" IS SLOWLY BEING PHASED INTO OFFICIAL NAVY CORRESPONDENCE AND DIRECTIVES IN LIEU OF NAVY MARS, IN A EFFORT TO ENHANCE TIE MARINE CORPS IMAGE IN THE MARS PROGRAM. I WOULD SUGGEST USING IT WHENEVER AND WHEREVER APPROPRIATE.

Mr. "Joe" Van Brocklin
N0ASB

NEWS&VIEWS

NOTEF/K6MCA....

Still no antenna to work RVN. New antenna received by vendor but box broken open and parts missing. New one ordered but will be another two to three weeks before another one will be here.

Bill

N0ENV/KA5MC....

He broke a record this month, with 600 completed phone patches. Reason for this, is that, there are now a sufficient number of gateways to meet the Japan, and Philippine stations, a condition that we never had before. These are: N0RTY, N0RSB, N0JPJ, N0AAV, and sometimes N0RTW, when propagation to RVN is not in yet. For the past 5 days, there has been a teletype station on 14,480USB that's been bothering us, badly. N0WTG, in North Island has not been heard from in two months. I guess they are relocating.

Keep up the F.B. work, Phil. MNG ED

N0ANP/W6YDK....

None of traffic activity; What happened to ZERO BEAT???? Received no copy JUL 68! Have a suggestion, which was made prior to this report! How about putting a DATE on ZB when made for the month??? Easier to keep track of, instead of having to guess what month the copy is for????!!!

Bob

We promise from now on, Bob, a month on each cover. How about submitting a cover design for next month.

MNG ED

N0IZG/KH6BGS....

Not very much to comment on but I noticed that you were wondering about what did happen to the artical I was doing on (P/P) here in Hawaii. Well, there is not that much to talk about as far as a change goes. That is the reason for no artical lately. I did receive an "A" form that I requested. I make this report out and keep a copy for my own personal record. Please forward me some more so I won't just have (1) copy each month to fill out and forward to you. I need a copy for myself also. If possible, forward me about (12).

Just one more thing, a very warm welcome to Sgt. Robert MATTSON and remember Bob, you have a long way to go to fill the shoes of Smitty. Best of luck from us in Hawaii. 73s Dick

We sure miss your article Dick, I hope we will hear from you soon. MNG ED

N0IXF/K4BUJ....

As you can see, our amateur activities have greatly increased due to the district directors recent memo. We hope to still increase our amateur as well as MARS output.

N0IVT/KP4BUJ....

The Mars freq is poor in the afternoon with N0IXF, and I sure would like a price list of the cost of patches from various states and cities.

We'll look for a phone listing for you Woody. MNG ED.

Marines At Work

As reported in last month's "ZERO BEAT," I had the privilege of relieving Lt. C.L. Arnold as custodian of NOASM/NAV TWO located at Henderson Hall. Until that time the only contact I had experienced with communications was that of strictly organization tactical equipment.

The initial tour of the facilities was quite impressive, with explanations of how much traffic, from where, which relay, storage banks, who did what and why. Remaining cool and calm, and trying to look as knowledgeable as possible I nodded to Wes and left as quietly as possible.

One week later it was reported that one of our men, "Henry K. Linear IV," had drown in forty inches of water because of not wearing a life preserver or some other lame excuse. Such as my indoctrination into the dark realms of Navy MARS.

Since our "splash party" much has been accomplished through the long hours hard work and deligent devotion to duty of the men of NOASM. Fortunately the loss from flood damage was drastically reduced with help of our "hot locker" sauna bath in which all the equipment was thoroughly dried, cleaned and maintenance was performed. From an original estimation of approximately a \$3,000 loss now appears to lie less than \$500 of uncle's money and more important, being able to become totally operational again in less than 96 hours.

I'm proud of this station and proud to announce to the other stations that we are now able to pull our share of the work load originating from in-country stations. After all isn't that our mission?

I'm happy to be associated with all of you. Keep up the good work.

D.E. Humphrey



Office memo about some kind of classes being held next door.

F.C.C. REPORT

33rd Annual F.C.C. Report

We would like to invite your attention to the issuance of the 33rd Annual Report of the FCC for Fiscal year 1967. It is available from the Government Printing Office for 75*. This is a comprehensive report of the Commission, covering a reasonable detail of the actions of the Commission. Not too many details appear about the amateur service but I believe you will get your 75 cents worth without difficulty.

via SARA SLIP

INFORMATION

There are two ways to get to the top of an Oak tree:

One is to climb up the tree, and the other is to sit on an acorn and wait •til it grows.

Wes



.....now disconnect the high-voltage platecap, but first....Bill.....hello Bill.....BILL???

When your RIG bugs out chances are the heat's on!

Ever wonder why your final tube or tubes bug out or get soft. Oh, we all know you watch the meters carefully, re-tune every 3 khz you QSY, vacuum the innards when one inch of dust forms etc. It couldn't be YOUR fault the ol' final goes bad... or could it?

With all the plate re-dippers, ALC peepers, smoke sniffers, fan blasters, and SWR fanatics no one seems to give a darn about the heart of any tube... the FILAMENT. I'll say it again gentlemen, FILAMENT, the real forgotten workhorse.

In thoriated tungsten filament tubes the source of emission is a layer of thorium on the filament surface. In order to maintain the balance between the loss and replacement of an active layer of thorium, therefore, requires operation within a comparative narrow range of temperature.

Short life may result, from the operation much above or BELOW rated values. It is essential that this voltage be monitored regularly to insure normal life. (Which is double from the average HAM practice.)

Within the narrow range of temperature, just mentioned, the emission available is quite critical with respect to filament voltage. It is a proven fact that a reduction of only 1% in voltage causes a loss of approximately 5% in emission. These facts also apply to any mercury vapor rectifier tubes with oxide filaments that you might use in your power supplies.

Conclusion: It is essential that the filament voltage be maintained within the range specified for any given type. Give it a try, and maybe next quarter you can get some needed accessories for the shack instead of plunking down good cash for a depleted filament.

Bob @ N0ASM/NAV2

Breaking the logjam

P — P network

RVN/CONUS P/P ASSIGNMENTS LISTINGS (PART ONE)

Each quarter, N0PPC brings up-to-date, all the RVN/CONUS P/P assignments, by getting with the Area Coordinator RVN, and going over each freq in use and incorporating all latest changes up to that given date. This quarterly report/ information sheet is submitted to all CONUS stations, and copies sent to those concerned in RVN, Chief Navy MARS Office, Directors and others on a courtesy

request basis. The information is via electrical means and confirmations copies are mailed to ensure receipt. It is expected that the local authorities, such as N0GVN, will distribute to those concerned in his immediate area. The following is the latest listings up to the last message sent for the quarter, effective 011500z JUL 68. Next quarterly listing is due approximately OCT 68.

Next month, we will finish the freq's and remainder of minor instructions that accompany each of these quarterly messages. Next month: RVN/CONUS P/P ASSIGNMENTS (PART TWO)..... 73.....

Bob N0SUZ/WB6OBA
Current N0PPC @ N0ANP

11402.5	LSB (P) N0RSE	(B) N0JPJ	WORK N0EFI
	USB (P) N0FMO	(B) N0ANP	N0EFB
13927.5	LSB (P) N0TEF	(B) N0FOC N0ZHP	N0EFC N0EFE
	USB (P) N0WTG	(B) N0JPJ	N0EFF N0EFS
14470	LSB (P) N0ANP	(B) NONE	N0EFL N0EFO
	USB (P) N0RTY	(B) NONE	N0EFG N0EFK N0EFM N0EFH
14480	LSB (P) N0RTW	(B) NONE	N0EFD
	(P) N0JPJ	(B) N0WTG	JAPAN
	USB (P) N0RSB	(B) N0AAV	N0EFA N0EFJ
	(P) N0RSB	(B) NONE	JAPAN
	(P) N0RSB	(B) N0JPJ	N0IKK N0RSN(ALL PHIL)
19430	LSB (P) N0RSE	(B) N0RSB	N0EFQ N0EFY
	USB (P) N0AVD	(B) N0YSR N0KOR N0ISY	N0EFA N0EFN
19956.6	LSB (P) N0FMO	(B) N0HFO N0HNNH	N0EFB
	USB (P) N0HSK	(B) N0IHC	N0IKK N0RSN(ALL PHIL)

ORDERS

Each month we will try to keep our readers posted on recent and future orders. via Mr. "Joe" Van Brocklin

GYSGT. W.P. Cooper fm N0EFD to N0RSB
SSGT. D.W. West fm N0ETG to N0AML
SSGT. B.H. Zgnowski fm N0EFA to N0RTP
GYSGT. W.B. Dauson to N0ETL
SSGT. C.N. Boni to WESTPAC fordu w/MARS
LCPL. D.M. Smith to N0FOC

SGT. R.E. James fm N0EFL to N0ASM
GYSGT. J. Cutitta fm N0EFB to N0FOC
CPL. W.R. Harris fm MARS Oki. to N0AML
CPL. D.J. Terpstra fm MARS oki. to N0TEF
SSGT. R. Lasko to WESTPAC fordu w/MARS
CPL. L.L. Mathess to N0IZG
SSGT. R.A. Smith fm N0ASM to OHIO

The rock

There is not much going on here on the "Rock" this month except for a few rotation dates coming up. SSgt Don West has left for the land of the big P.X. and 0 those round eyes. GySgt Wiles B. Danson Jr. K4EIK has got the job as the Amateur Radio Coordinator on Okinawa and I'm Hollowing for some help. By the end of the year there will only be the two of us left. Cpl Paul Cowfer, K3PRV has come into the system and will be with us until April 69

The weather here is as sticky as it can get and on the 4th of Aug. this island did some shimmeying and shaking it was 4 on the scale of 10.

Well I have got the Camp Hauge station all cleaned up but the building needs so much work about \$4,000 and one of the GySgts at Hauge is trying to get some gear to fix up the building so we can at lease operate out of the building. The 20 meter beam fell down on the 6th of July and we here at KR6DI have been operating on a 20 meter wire. We have already surveyed the top of this hill for a RHOMBIC antenna and if we can get the towers to put it up on, then it will go up, but that is a big IF.

Here at KR6DI since the antenna went down have lost our east coast contacts, but have one PA. contact now on 15 meters and we have been hearing K4MCL on around 20 meters at that time.

For all of the boys that are leaving I would like to say you all did a job well done.

73s Bud

Advanced technology

Did you know that pork pie is not only a pie made of chopped pork, but is also a name for a round, flat crowned hat worn by men?

To be conscious that you are ignorant is the great step toward knowledge.

via SARA SLIP

MILITARY AFFILIATE

RADIO SYSTEM

THE LID....

The chief operators, local amateurs newsletter editors and other operators in the Navy MARS system have been conspiring to make me feel guilty.

When I load the final amplifier, I sometimes do not remember to connect the antenna. I sometimes find myself exceeding the copying speed of the other operators by five to ten percent. I say "QSL" and enjoy it. I never say 'over' and do not mind it at all. I have been known to ragchew and possibly to excess by some standards. I chase DX on the Navy MARS frequencies up or down four or five KHz, but because there are so many other operators on the frequency I no longer feel wicked about it. I don't use my call sign all the time and my language is sometimes foul. I don't have a DNC 8 and don't plan ever to have one in the station. I am not affronted by reports of being off frequency or having a chirpy, signal, although I think that they are definately wrong. I enjoy a verbal fight on the local district net and this can be downright enjoyable.

I have considered myself an excellent operator for five years and now all of a sudden some district director tells me I am a lid, whatever that means.

How about all you do goodies getting off my back and let me enjoy the hobby which is mine.



A FREE MILITIA
A FREE COUNTRY
VOTE

IF I WERE:

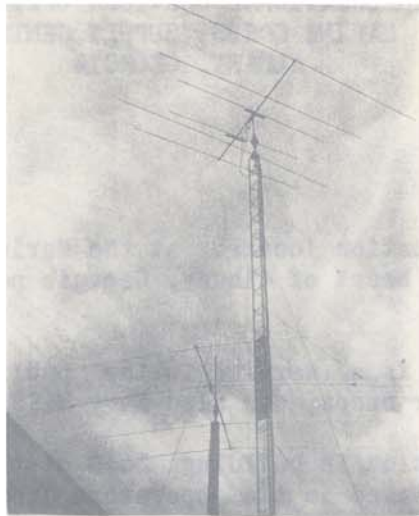
Starting next month ZERO BEAT will be printing the constructive and sincere suggestions of our readers, for a better Navy MARS Program.

By consent of Chief of Navy MARS, all letters will be screened by his office and action will be initiated on those of possible merit.

If you were Chief Navy MARS, what would you do to better the Program? Write your suggestions, in 300 words or less, to: ZERO BEAT

c/o Navy MARS Station NAV2
HQBN, HQMC
Henderson Hall
Arlington, Virginia
22214





INFORMATIONAL SERVICES OFFICE
MARINE CORPS, SUPPLY CENTER
ALBANY, GEORGIA

Release No. 106-68
Amateur Radio Station
By: Sgt. Mack Rush

N0AMC/K4MCL is a 602 station located at the Marine Corps Supply Center approximately seven miles from the heart of Albany, Georgia performing various types of communications.

The station's function is a service to the public operating on 10, 15, 20, 40, and 75 meters on the amateur bands, and also Navy MARS

Moved to its new location in building 5640 of the Supply Center in September 1967, equipment that is used is the operators dream and a technicians nightmare, and it's capable of dual operations. It was also during 1967 that the station changed from Army MARS to Navy MARS.

Station equipment is a 32S1, 75S3, 30L1, and a Henry 4K-2 linear amplifier. The station also has two CV89/URA-8A converters, two model 15 teletype typewriters, two model 14 reperforators, one 312B-4 speaker console and one Gonsett phone patch.

Outside the station looks like a small antenna farm. The station has a 50-foot high 20-40 duo bander, a 10-15 meter beam about 45 feet high, a 75 meter doublet, and an 18 meter doublet.

Reopened in November 1967, this station is now an air-conditioned facility operating under the supervision of First Lieutenant Clarence Hudson, N0YMN.

PHOTOGRAPHS OF N0AMC/K4MCL ON
PAGE 9

LEFT....SSGT. F. TOWNSEND
RIGHT..SSGT. A. FORESTIERE

PHOTOS PREPARED BY MR. MOLNAR
HQMC

Active operating personnel are Staff .Sargeants Anthony Forestiere and Frank Townsend. These operators insure that the condition of the station and all the equipment are maintained at a state of readiness at all times. Training programs for future operators have been in effect at this station for more than a year.

Opening its doors for business at 7 A.M. and at 9 P.M., N0AMC/K4MCL is open six days a week.



When's your birthday, Dan? January 23?
Fine, that makes 123 messages this week.



BRAIN TEASER

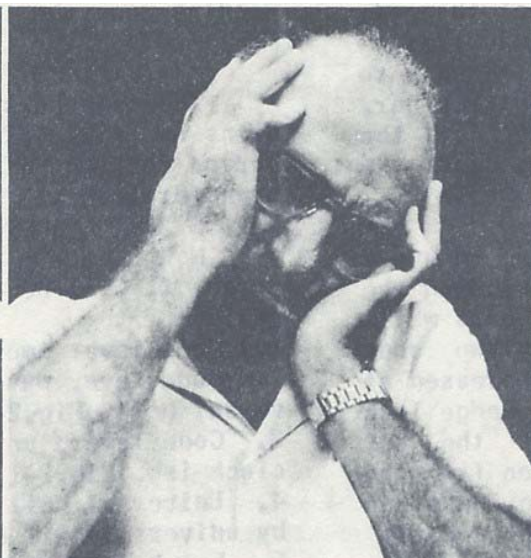
Each morning a man living on the thirteenth floor of an apartment building would get on the self-service elevator push the button for the ground floor, ride down and go to work. Each evening he came back to the building and caught the same self-service elevator. When alone he would push the button for the eighth floor, ride up, get off, and have to walk up to his room on the thirteenth floor. If he was on the elevator with someone else, he would ride up to the thirteenth floor.

Question: Why did he have to walk up five floors instead of riding the elevator?

Hint: he did not walk by choice. There is a perfectly logical solution. Answer will be found elsewhere in this issue.



This is Bob, the new managing editor of ZERO BEAT....would you care to write an article for us....you will, great!!!!



PROMISES...PROMISES...PROMISES...two days 'till press and no articles.



I'll remember you guys, lost my job. Now work the police run at 8th & I.



by: GySgt Wesley L. Wilson

@ NOASM/NAV2

Theory of operation...

The reader should be able to locate and identify parts prior to studying the following functions. This ability may be accomplished by following the drawings and comparing to the actual mechanism. In some cases the keyboard cover will have to be removed to see functions. Each key lever in the lower three rows and the space bar are attached to a code lever and each key lever in the top row is attached to a function lever. See Fig. 1-3

It must be remembered and can be seen on actual equipment that the code bars run from left to right when facing the front of the LAK. From the back to front they are numbered clutch trip bar, 1,2,3,4,5, code bars,6,7, are for the character counter mechanism, and the last one is the keyboard lock bar.

The code levers are pulled downward by action of their springs holding the code levers free of the code bars while in a marking condition. No two code levers, key levers, may be depressed at any one time because of the wedge lock mechanism mounted underneath the key lever assembly. As can be seen from the drawing Fig. 2-2 no two wedge locks can go between the lock bails when properly adjusted.

In a marking condition the signal generator is locked and the code bars and trip clutch bar are held toward the left against tension of their springs by the locked **code bail**.

When any key lever is depressed the code lever rotates at its pivot point, causing the front of the code lever to go down and the rear to move up causing the code lever universal bail to rotate. See Fig. 2-1. As the universal bail rotates clockwise an extension (A) releases the universal bail latch lever allowing it to move downward under tension of its spring. As the latch lever moves downward it strikes the code bar bail latch moves downward, releasing the code bar bail. The code bar bail moves to the right under tension of its spring and also unlocks the code bars, which move to the right (spacing) under tension of their springs. The unselected code bars are held in their marking position by the code lever contacting the underside of the code bars. Close inspection will reward the observer with a picture of the code bar held to the left by tins. Various tins are missing, depending upon the character of function. Fig. 2-4.

The code bars have vertical extensions on the left end that engage a curved portion of the signal generator transfer levers.

Now that the reader is totally confused it will be well to stop and summarize.

1. Code lever moves downward, Fig.2-1
2. Code lever pivots and contacts universal bail. Fig.2-1
3. Code lever universal bail rotates clockwise, Fig.2-1
4. Universal bail latch lever released by universal bail extension, Fig. 2-1(A)
5. Latch lever moves downward striking code bar bail latch Fig. 2-1
6. Code bar latch moves downward releasing code bar bail Fig. 2-3
7. Code bar bail and selected code bars move right (spacing) under tension of their springs Fig. 2-3 and Fig. 2-4.

8. Code bar extensions move right Fig. 2-1 (B) and engage curved portions of universal generator transfer levers.

At this point we will bring to the end of the first article on functions. Next month the signal generator, reset bail assembly and a short statement on clutches will be introduced.

This writer knows that it is very hard to visualize the actions mentioned lock ball channel to try and follow through, repeating the functions will be rewarding. It is very important to know and understand how the machine works to be effective in trouble shooting. At this point the reader should be able to trouble shoot the keyboard up to the signal generator by observing if the right code bars are selected when depressing a key. Remember that left is marking and right is spacing.....

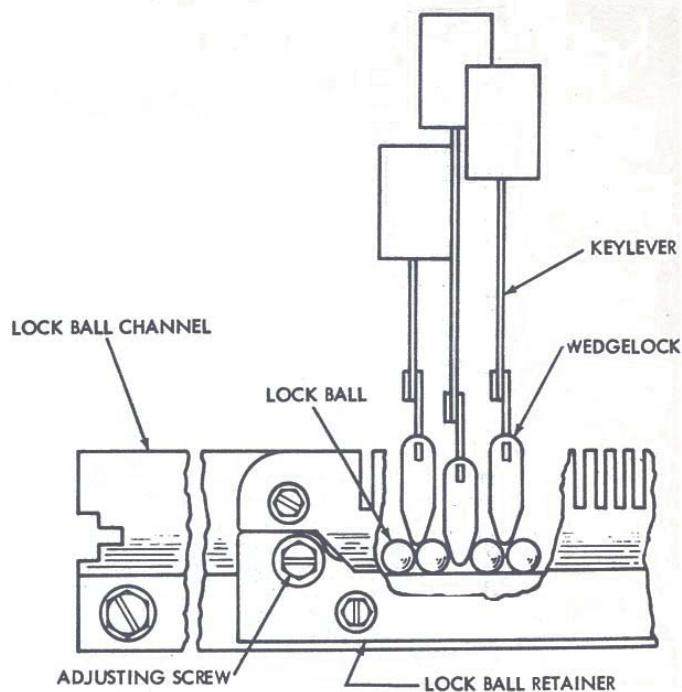


FIGURE 2-2 WEDGELOCK MECHANISM

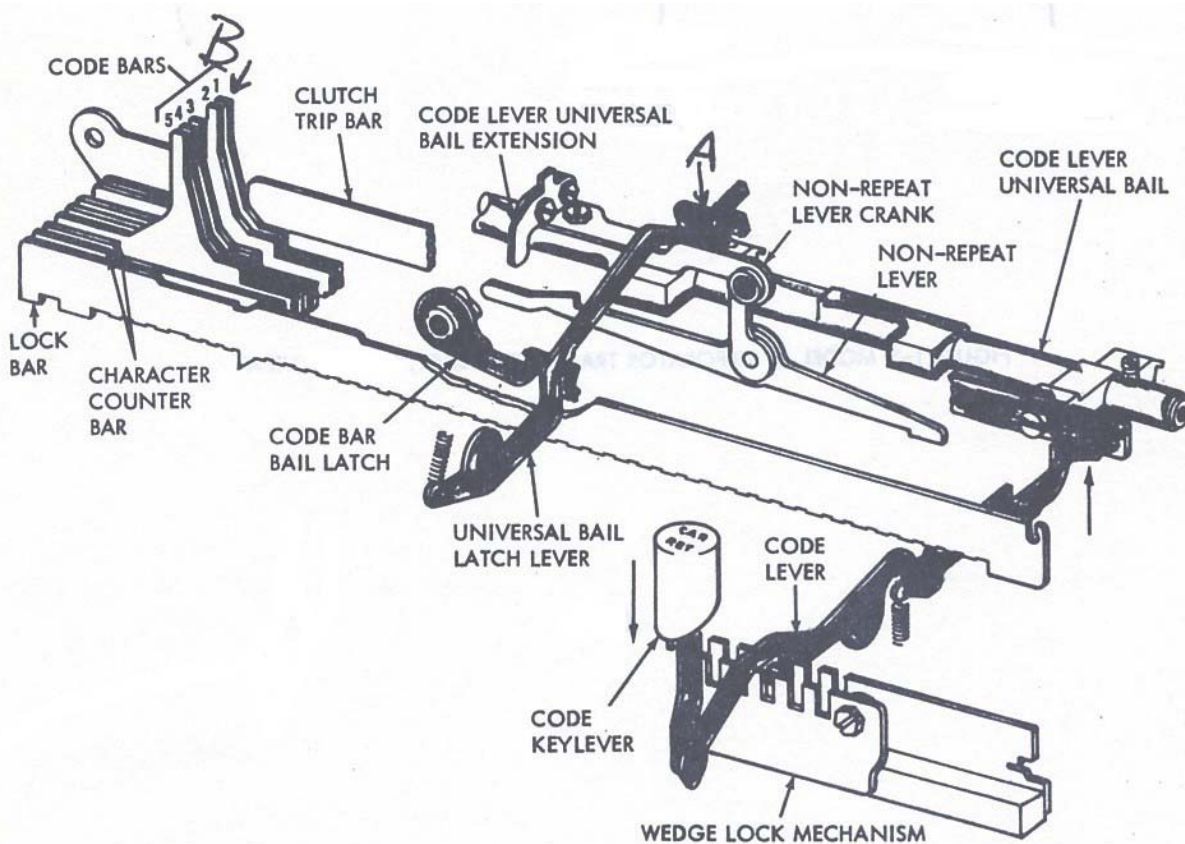


FIGURE 2-1 CODE BAR & CODE LEVER UNIVERSAL BAIL MECHANISM

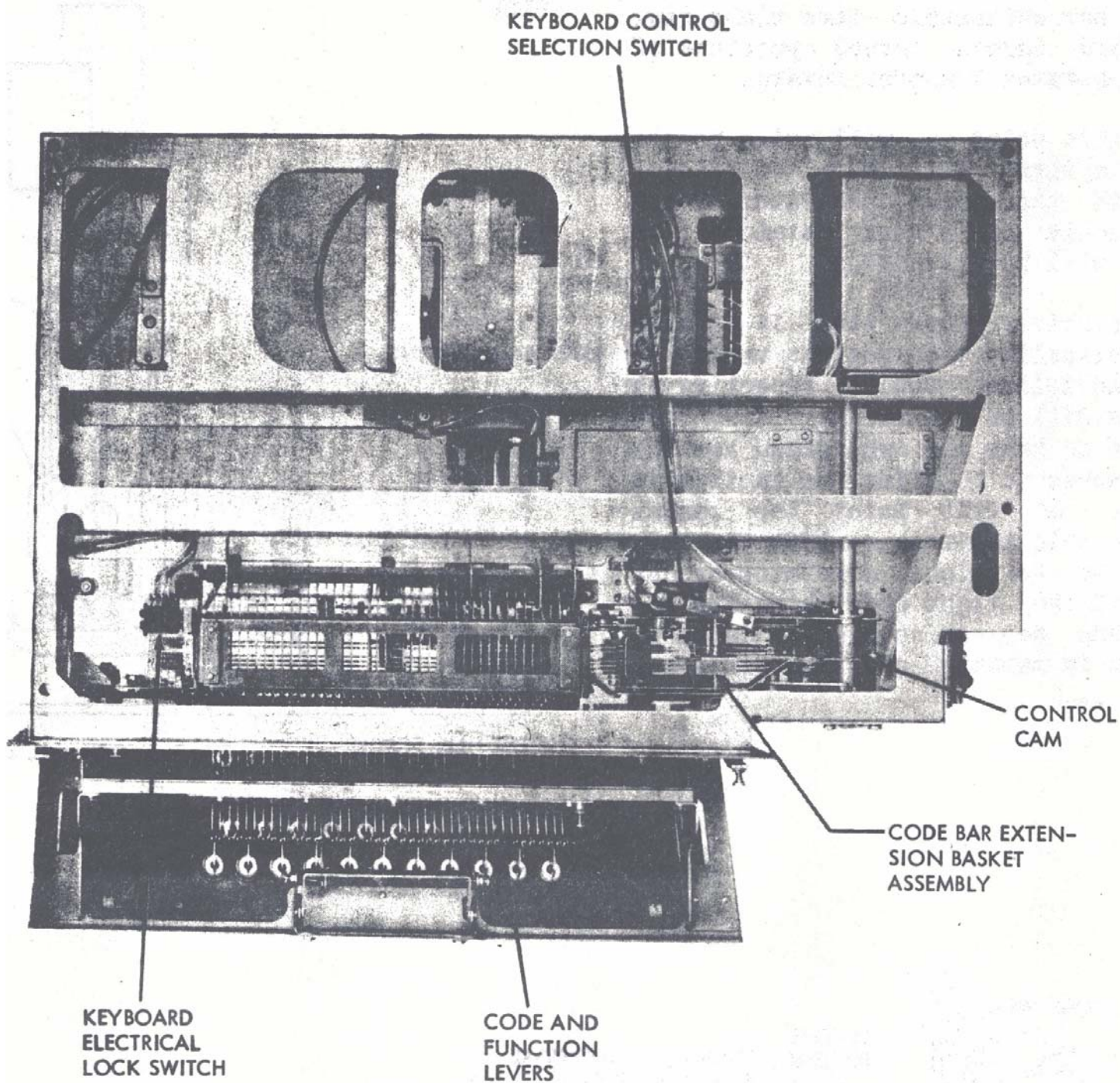


FIGURE 1-3 MODEL 28 PERFORATOR TRANSMITTER BASE, BOTTOM VIEW

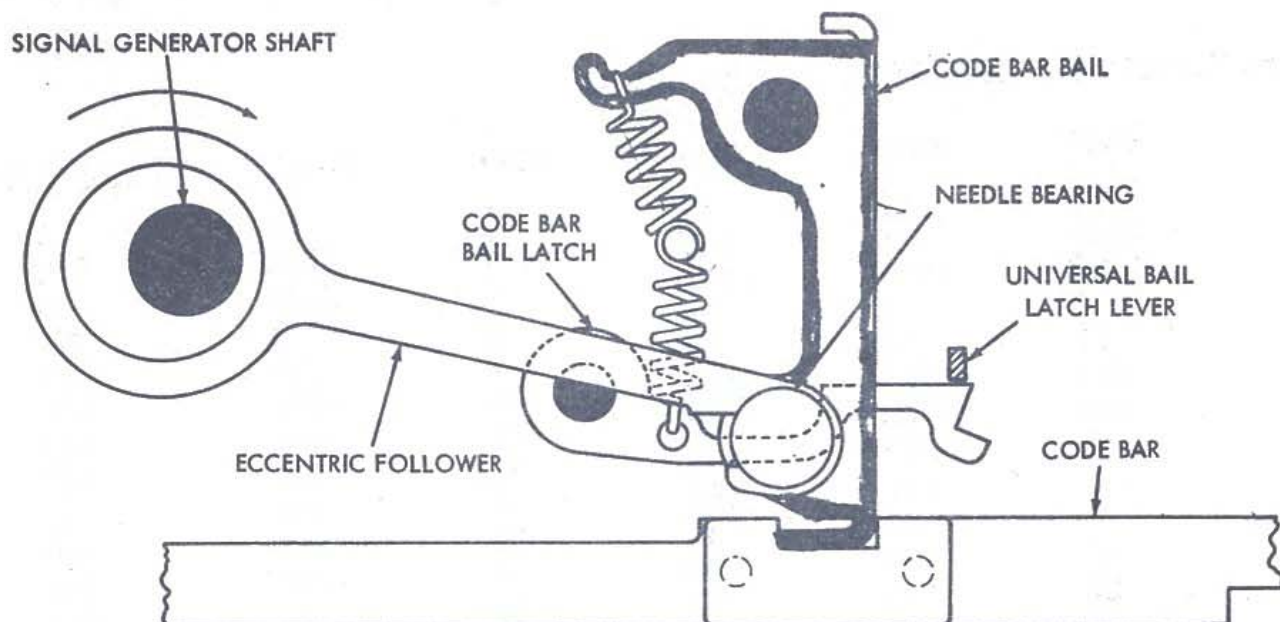


FIGURE 2-3 CODE BAR BAIL MECHANISM

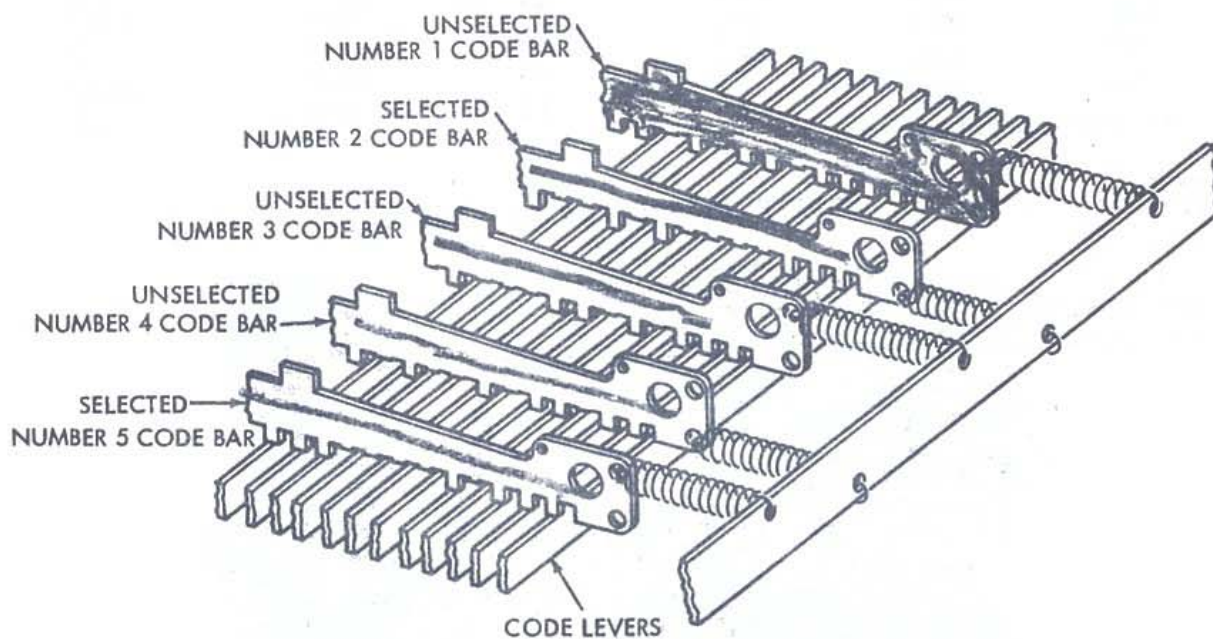


FIGURE 2-4 CODE BAR SELECTION

Traffic Report for July 1968.....for N0ALM

	ORIG	RCVD	RELY	DLVD	TOTAL	TOTAL P/P
N0AMC	10	26	17	5	58	0
N0ANP	3320	425	167	258	4170	503
NAV 2	22	1798	1820	0	3640	50
N0EEM	0	2	0	0	2	750
N0EFA	51	125	67	7	250	65
N0EFB	617	2265	2890	625	6397	638
N0EFC	265	68	268	200	801	653
N0EFD	92	557	649	92	1390	1037
N0EFJ	152	171	163	8	494	629
N0EFL	89	50	139	89	367	308
N0EFY	55	104	104	0	263	698
N0ENV	28	73	90	34	124	600
N0ETG	59	13	6	7	85	50
N0ETH	77	67	64	3	151	31
N0ETJ	0	0	0	0	0	0
N0ETL	0	0	0	0	0	0
N0FAA	57	882	838	41	1818	411
N0FJM	7	14	0	14	35	466
N0FOC	2	0	2	0	4	660
N0IVT	1	8	.0	9	18	77
N0IXF	6	240	253	7	506	11
N0IZG	0	1	0	1	2	1232
N0RSB	67	23	3	23	116	2177
N0RSE	88	3005	3641	91	6825	1337
N0RTP	181	253	373	15	772	0
N0RTW	22	655	609	46	1332	2350
N0TEF	14	215	11	13	253	18
N0XXN	No report received					

Note: N0ETI and N0ETK are inactive. Parris Island has no station.



Traffic Reports for July 1968. for amateur operations N0ALM

	ORIG	RCVD	RELY	DLVD	TOTAL	TOTAL P/P
W4BHU						
K4BUJ	1	204	217	2	424	299
W4LEV	0	0	0	0	0	24
K4MCL	6	5	3	2	16	30
W4NTR	0	0	0	0	0	2
W4PFC	26	290	172	16	504	36
KG4AM	0	2	0	2	4	480
KP4AZJ	1	0	0	1	2	474
KA5MC	Not applicable in Japan . no third party agreements.					
W6FCS	0	0	0	0	0	7
W6IAB	20	85	18	10	133	330
K6MCA	221	33	23	12	289	638
W6YDK	3075	52	21	32	3179	291
W6ZJB	5	16	2	13	36	353
KH6AJF	0	0	0	0	0	33
KH6BGS	0	1	0	1	2	62
KR6DI	16	5	19	2	42	178
KR6GF	42	17	7	10	76	563
KR6MB	5	0	0	0	5	395
KR6MH	128	38	36	2	204	1293
WA7AAJ	20	0	6	0	26	16

Orig: traffic that originates from your station. Example FM N0EFB 5R W4NTR etc

Rcvd: traffic that you receive from other stations.

Rely: traffic that you receive from another station and then relay to another.

Dlvd: traffic that is locally delivered to the party it is ultimatly destined to.

Total: a total of orig, rcvd, rely and dlvd.

Some stations are using the term SENT. This can be changed into relayed and dlvd if the following is done: Sent is the total of orig and relayed, so subtract orig and locally delivered traffic to get relayed.

ZERO

BEAT

Month of _____ 19 _____

1.) MONTHLY TRAFFIC REPORT

MARS

AMATEUR

A. Message traffic

Orig.

Rcvd.

Rlyd.

Dlvd.

TOTAL:

B. Phone-Patch Traffic:

TOTAL:

TIME

FREQUENCY

STATION

MODE

3.) NEW PERSONNEL:

☐ NO CHANGE

Name

Rank

Ser.No.

MOS

MARS

AMCALL

ARRIVED

4.) FOR SALE OR TRADE:

Item

Your Name

5.) COMMENTS

6.) HUMOR or QUOTES:

7.) I would like to be featured in Station of the Month.

☐This Month

☐Near Future

☐Not interested

8.) I would like to ☐Write an article for ZB*

☐See the following changes*

☐See no changes

9.) If I were Chief Navy MARS

■■ HEADQUARTERS MARINE CORPS HENDERSON HALL ARLINGTON, VIRGINIA 22214 ■■